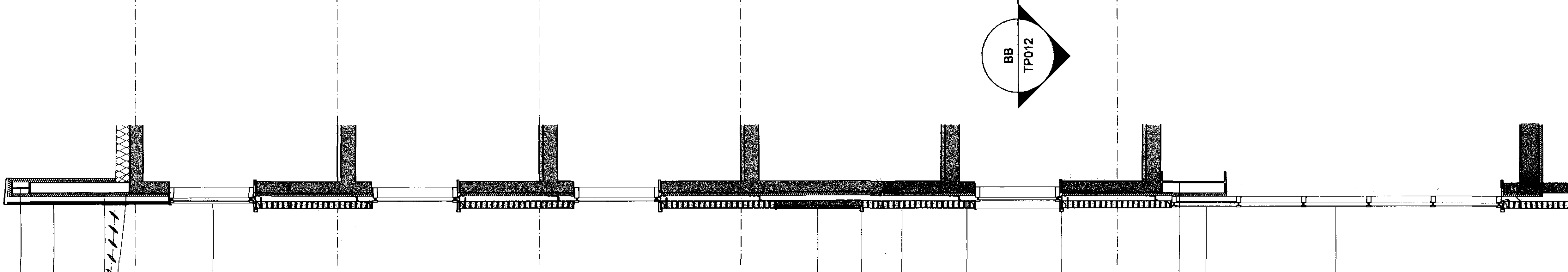
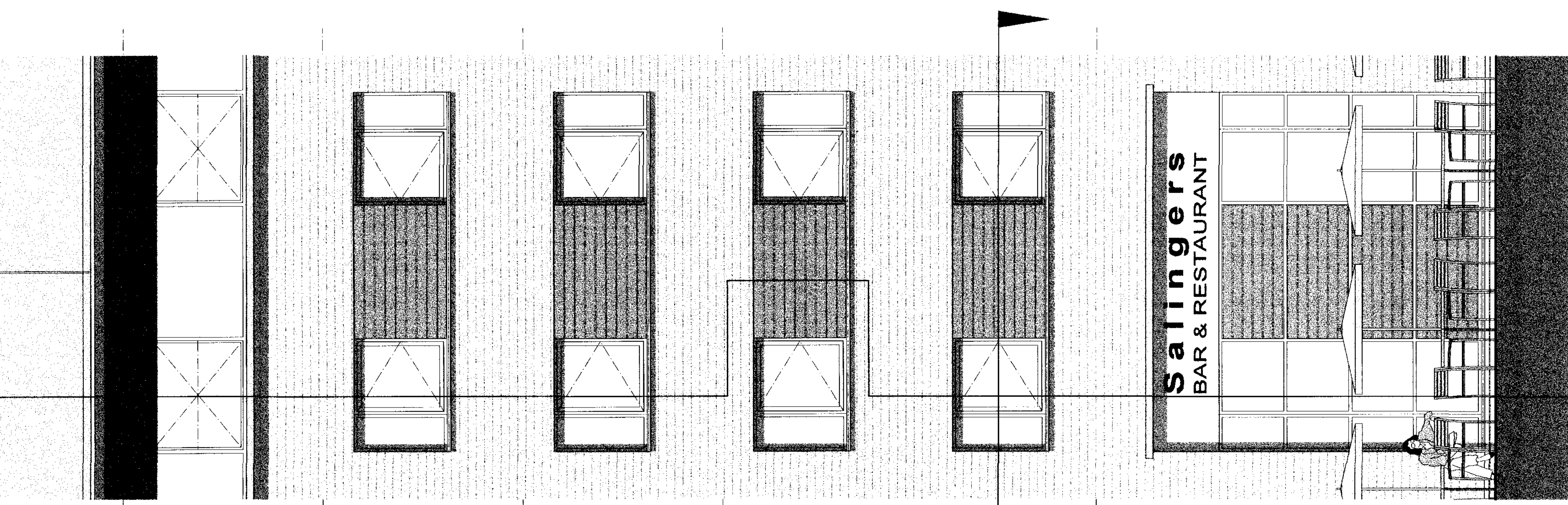


Project	VILLAGE HOTEL, FARNBOROUGH	
Title	BAY PLAN, SECTION & ELEVATION	
Dwg No	9592/TP/012	Revision
Scale	1:50 @ A2	Date
		01.05.06



- Steel cantilevered frame to form parapet
- Insulated cladding panels
- Briese Soliel between supporting fins at approx 3.4m centres
- Continuous ribbon glazing with insulated spandrel glazing between window units
- Cedar cladding to 75mm blockwork spandrel between window openings
- Continuous window cill
- Facing brickwork
- Lintels with cavity tray and weepholes at every 3rd parapet
- Continuous window cill
- Steel edge beam
- Insulated spandrel glazest unit to curtain walling
- Glazed units to curtain walling. Cedar spandrels fitted to panel retained by c/w system

RUSHMOOR BOROUGH COUNCIL
PLANNING SERVICES
 9 - AUG 2006
RECEIVED
 DEVELOPMENT CONTROL
OE/SSO/mc

AA
 TP012
 Front Elevation
 Bay Section

BB
 TP012
 Bedroom Window
 Bay Plan